

SECTION 9, T.6N., R.2E., S.L.B. & M.

IN WEBER COUNTY
SCALE 1" = 400'

TAXING UNIT: 58, 231

SEE PAGE 1

GREEN HILL COUNTRY ESTATES
PHASE NO. 6

SEE PAGES 79 TO 85

GREEN HILL COUNTRY ESTATES
PH. NO. 4
SEE PAGE 60

GREEN HILL COUNTRY ESTATES
PHASE NO. 2
SEE PAGES 58 & 59

GREEN HILL COUNTRY ESTATES
PHASE NO. 3
SEE PAGE 60

GREEN HILL COUNTRY ESTATES
PHASE NO. 1
SEE PAGES 50-55

THE DOUGLAS J CARDON &
JANNIE G CARDON TRUST
210110019
28.5 AC±
TU 58

BRENT DICKENS ET AL
210110021
10.11 AC±
TU 58

DALE CHRIS BRUNKER
& CYNTHIA E BRUNKER
210110015
TU 58
9.81 AC±

TOMASZ ROGOZ
210110017 TU 58
U.S.A.
210110018 TU 58

W BRENT DICKENS &
PATRICIA B DICKENS
TRUSTEES
210110031
26.07 AC±
TU 231

GREEN HILL COUNTRY
ESTATES WATER &
SEWER DISTRICT
210110030
12.34 AC±

W BRENT DICKENS &
PATRICIA B DICKENS
TRUSTEES
210110013
15.02 AC±
TU 58

GREEN HILL
COUNTRY
EST PH 1A
210110010
25 CH

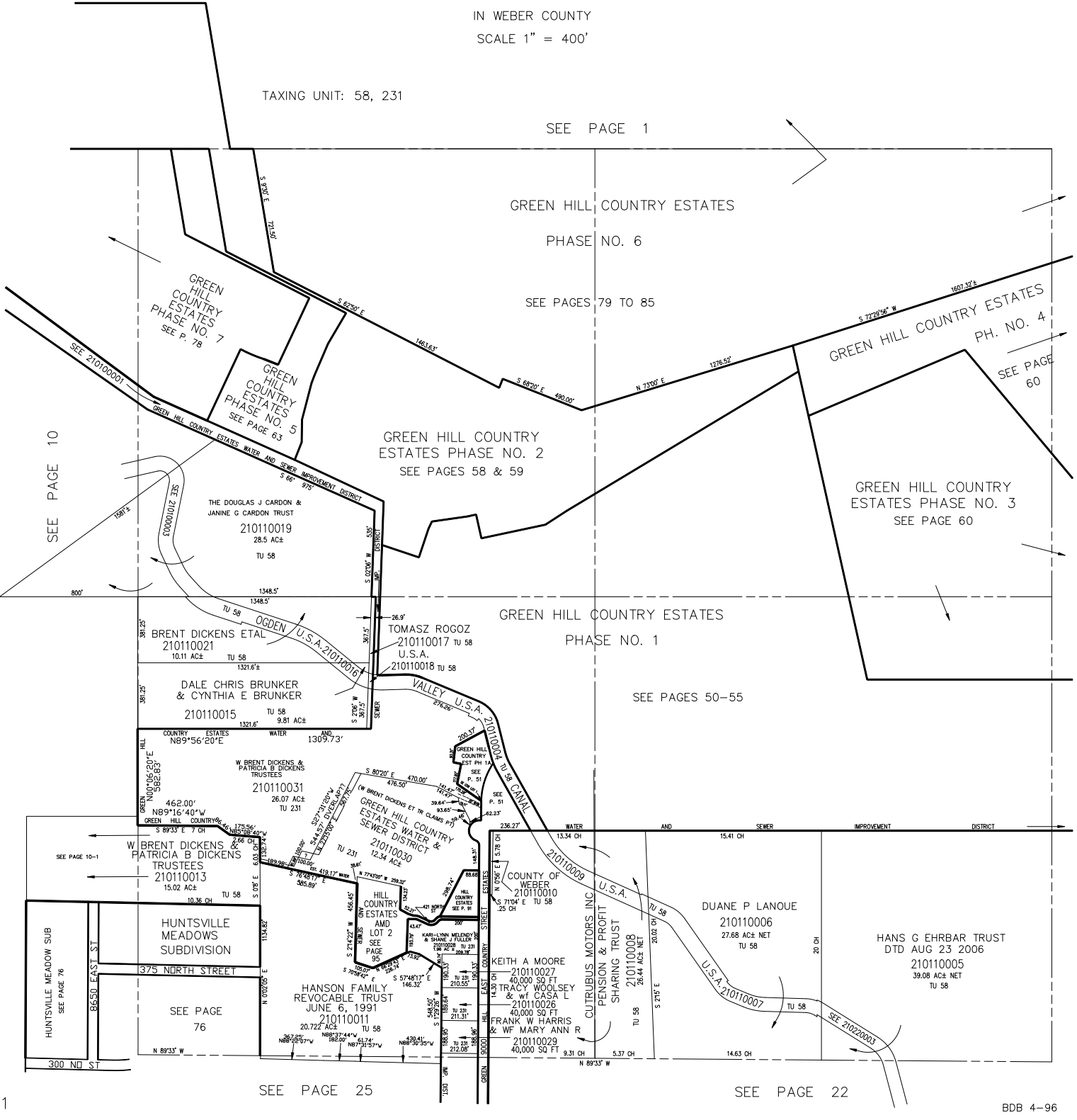
DUANE P LANOUÉ
210110006
27.68 AC± NET
TU 58

HANS G EHRBAR TRUST
D TD AUG 23 2006
210110005
39.08 AC± NET
TU 58

HANSON FAMILY
REVOCABLE TRUST
JUNE 6, 1991
210110011
20.72 AC±
TU 58

KEITH A MOORE
210110027
40,000 SQ FT
FRANK W HARRIS
& WF MARY ANN R
210110029
40,000 SQ FT

CUTRUBUS MOTORS INC
PENSION & PROFIT
SHARING TRUST
210110008
28.44 AC± NET
TU 58



SEE PAGE 10

SEE PAGE 10-1

SEE PAGE 76

SEE PAGE 25

SEE PAGE 22